

Montcalm Public Employees Credit Union

Quarterly Newsletter

April 2006

Thank you to all who attended our 40th Annual Meeting. Congratulations to our Drawing Winner Nancy Nielsen who won a Sony Kitchen Radio/CD Player.

Hours of Operation

Monday thru Friday

9:00 am until 4:30 pm

Walk-in, Drive-Thru, or Phone!

We can meet your needs, call us for an appointment for after hour services.

We have GREAT LOW RATES!!

Are you in the market for a new car?

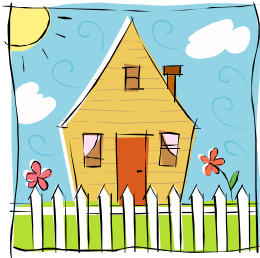


We have great rates on 2006 vehicles 4.9% APR for up to 60 months.

Are you retiring or moving out of the area?

Don't leave us! Once a Member Always a Member! Have your Social Security, Pension, and Retirement sent Direct Deposit to the Credit Union. If you are starting a new job you can still have your payroll Directly Deposited into your Credit Union Accounts.

Start Spring off right! Let us help you "Spring Clean" your finances with a consolidation loan. Sweep all of your credit card balances into one convenient low monthly payment at the credit union.



We also have great rates on loans for anything from remodeling, landscaping, a new deck, a swimming pool, or even for vacation.

Member's Choice Insurance

Member's Choice disability and/or life insurance is available on all loans. Ask about Member's Choice insurance for your next loan!

Do you have any questions or comments about products or services offered by the Credit Union? If you do, call one of our friendly representatives for assistance.



Do you have any suggestions for improvements in services that the Credit Union offers? Let us know, we are always looking for new and improved ways to meet our members needs.

Lost or Stolen Debit Cards

To report debit card as lost or stolen after business hours, please call 1-800-523-4175

Your Savings is insured to \$100,000 by the National Credit Union Administration, a U.S. Government Agency.

Holiday Hours for 2006
We Will be CLOSED:
 * Friday, April 14 (Closing at Noon) Good
 * Friday
 * Monday, May 29 Memorial Day Me-
 * Tuesday, July 4 Independence Day Independ-
 * Monday, September 4 Labor Day
 * Monday, October 9 Colum-

BOARD OF DIRECTORS

William Seiter-*President* George Showers-*Vice*
 Emily Longnecker-*Treasurer* Karen

CREDIT COMMITTEE

Myrna Walldorff
 Bud Longnecker
 Larry Petersen

STAFF

Marsha Andersen Lisa
 Longnecker Lara Licari
 Camille Christensen

1157 EAST MAIN • PO BOX 469 • EDMORE, MI • 48829

www.mpecreditunion.com

Phone: 989-427-5663 or 800-759-8652 • Fax: 989-427-3773